



What is the MHTTC Network?

The **MHTTC Network** includes a Network Coordinating Office, ten Regional Centers, a Tribal Affairs Center, and a Hispanic and Latino Center. The MHTTC Network is funded by the Substance Abuse and Mental Health Services Administration (SAMHSA) to develop and disseminate resources, provide training and technical assistance (TTA), and support workforce development. The MHTTC Network will strengthen the capacity of states and islands, organizations, and providers to deliver high-quality services and evidence-based practices (EBPs) in mental health promotion, prevention, treatment, and recovery.

What is the Pacific Southwest MHTTC?

The Pacific Southwest (PacSW) MHTTC serves **SAMHSA Region 9**. The PacSW MHTTC will support the workforce to effectively implement EBPs across the continuum of care. The PacSW MHTTC will also promote access to culturally competent services and practices for diverse populations. In 2018-2019, the MHTTC will focus on **school-based mental health**.

Who is part of the Pacific Southwest Region 9 MHTTC?

- Arizona
- California
- Hawaii
- Nevada
- American Samoa
- Guam
- Federated States of Micronesia
- Marshall Islands
- Northern Mariana Islands
- Palau



What Services Will the Pacific Southwest MHTTC Offer?

The Pacific Southwest MHTTC will offer an array of **low- and no-cost virtual, onsite, and resource-based learning** opportunities, such as:

- Region 9 mental health newsletter
- Webinars and other virtual trainings
- E-learning courses
- Individualized coaching and consultation
- Innovative and practical products to support your work
- Affinity groups and Communities of Practice
- Regional trainings and training-of-trainer events

Please sign up to join our newsletter mailing list.

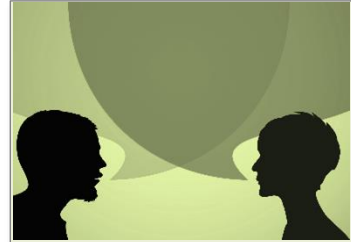
<https://tinyurl.com/pacsw-mh-news>

PacSW MHTTC

Focusing on School Mental Health

In 2018-2019, the PacSW MHTTC includes a special focus on school mental health in these areas:

- **Integrated Support Systems:** Supporting a data-driven approach to understanding the spectrum of need and use of ISF, MTSS, PBIS, and other effective service models.
- **Trauma & Resilience:** Creating an understanding of the relationship between trauma and resilience and mental health, trauma-informed school leadership strategies, and practice/ program implementation.
- **Mental Health & Student Learning Outcomes:** Increasing understanding of student mental health and its connection to school climate, school safety, and academic outcomes.
- **Mental Health Screening & Referral Pathways:** Helping school site and district leadership establish strong referral pathways within schools and between schools and CBOs.
- **Stakeholder Engagement:** Supporting students, families, educators, and community engagement in school mental health leadership.



Please let us know
about your TTA needs
and topic interests.

[www.surveymonkey.com/
r/MHTTCneedsassessment](http://www.surveymonkey.com/r/MHTTCneedsassessment)



Products and services related to any of the tracks listed are offered to strengthen the work of school-site leaders (educators, school counselors, psychiatric social workers, administration, students, and families), school partners (community-based organizations, alliances, families), district and state education leaders (LEAs, ISDs, SEAs), and the student mental health workforce (pre or in-service teacher or student mental health professional programs).

Contact the Pacific Southwest MHTTC

<https://mhttcnetwork.org/centers/pacific-southwest-mhttc/home>

Phone: 1-844-856-1749

Email: pacificsouthwest@mhttcnetwork.org