

Emergency Department Initiative

Lisa Shumaker, MA

Prevention Manager

Markay Adams, BA

Prevention Coordinator

Leadership for a Healthy Arizona

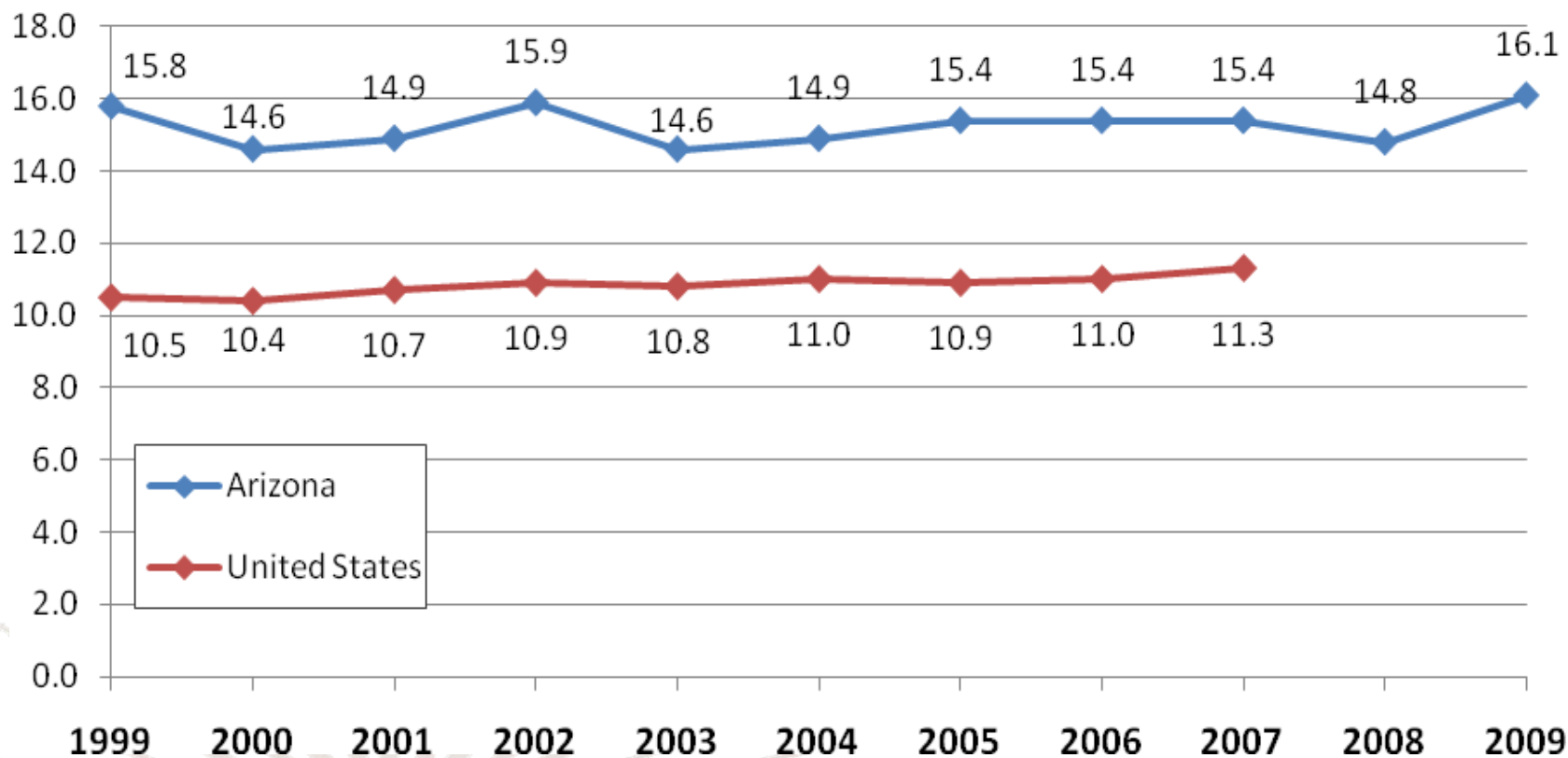


**Division of Behavioral
Health Services**

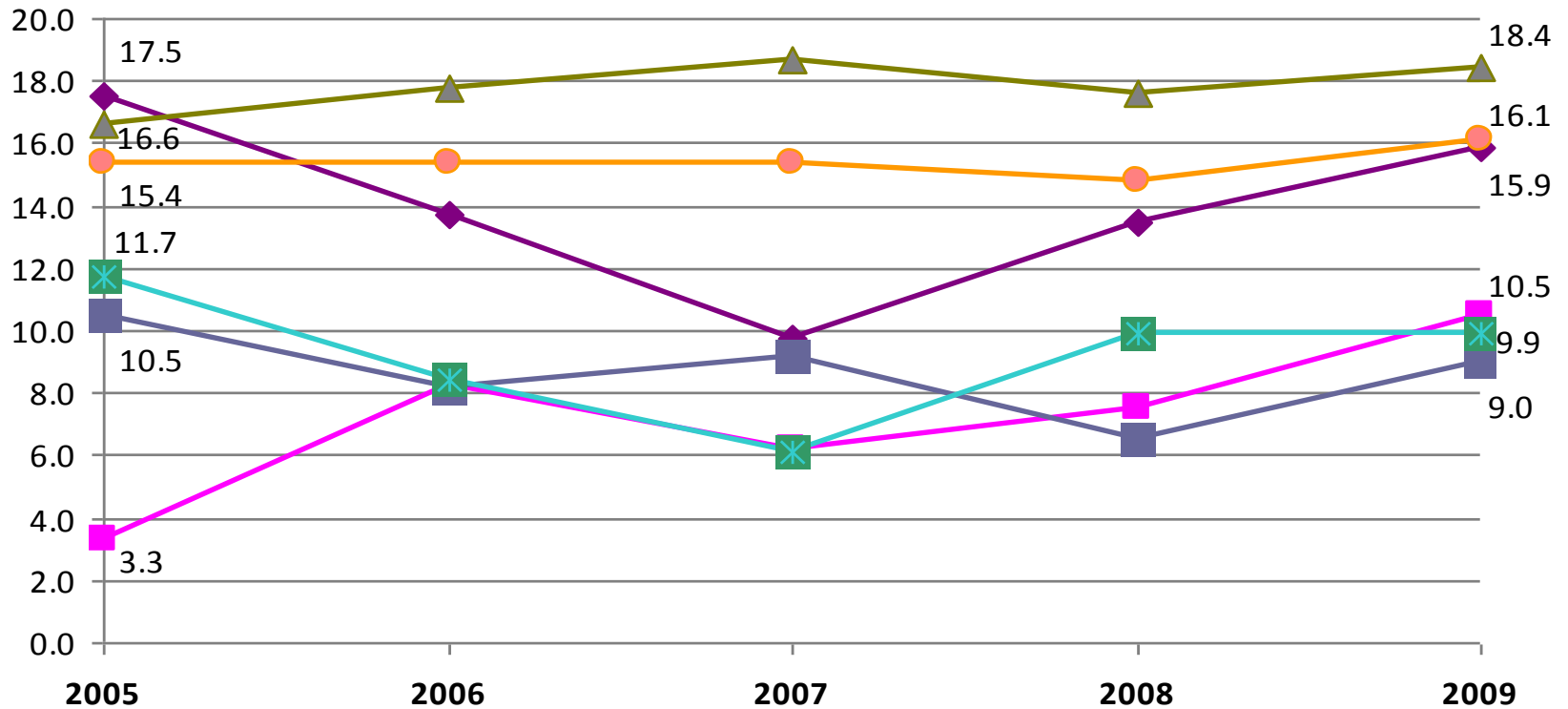
Presentation Overview

- Why- trends in attempts and deaths
- Needs assessment
- What/ how- partners, training, merging substance abuse and suicide

Age-Adjusted Suicide Rates per 100,000 Residents by Year, Arizona Compared to the United States, 1999-2009

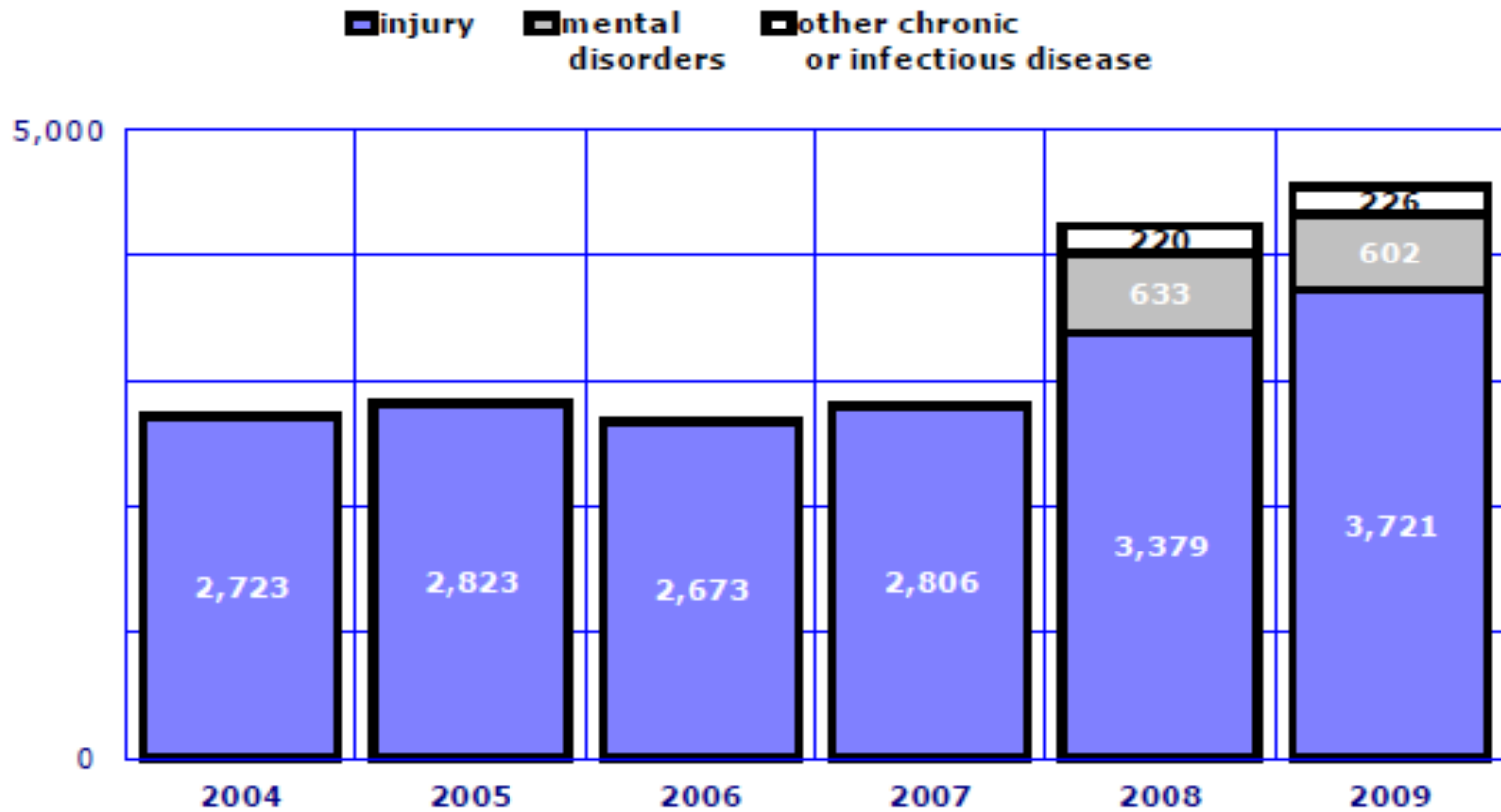


Age-Adjusted Suicide Rates per 100,000 Residents by Race/Ethnicity, Arizona 2005-2009

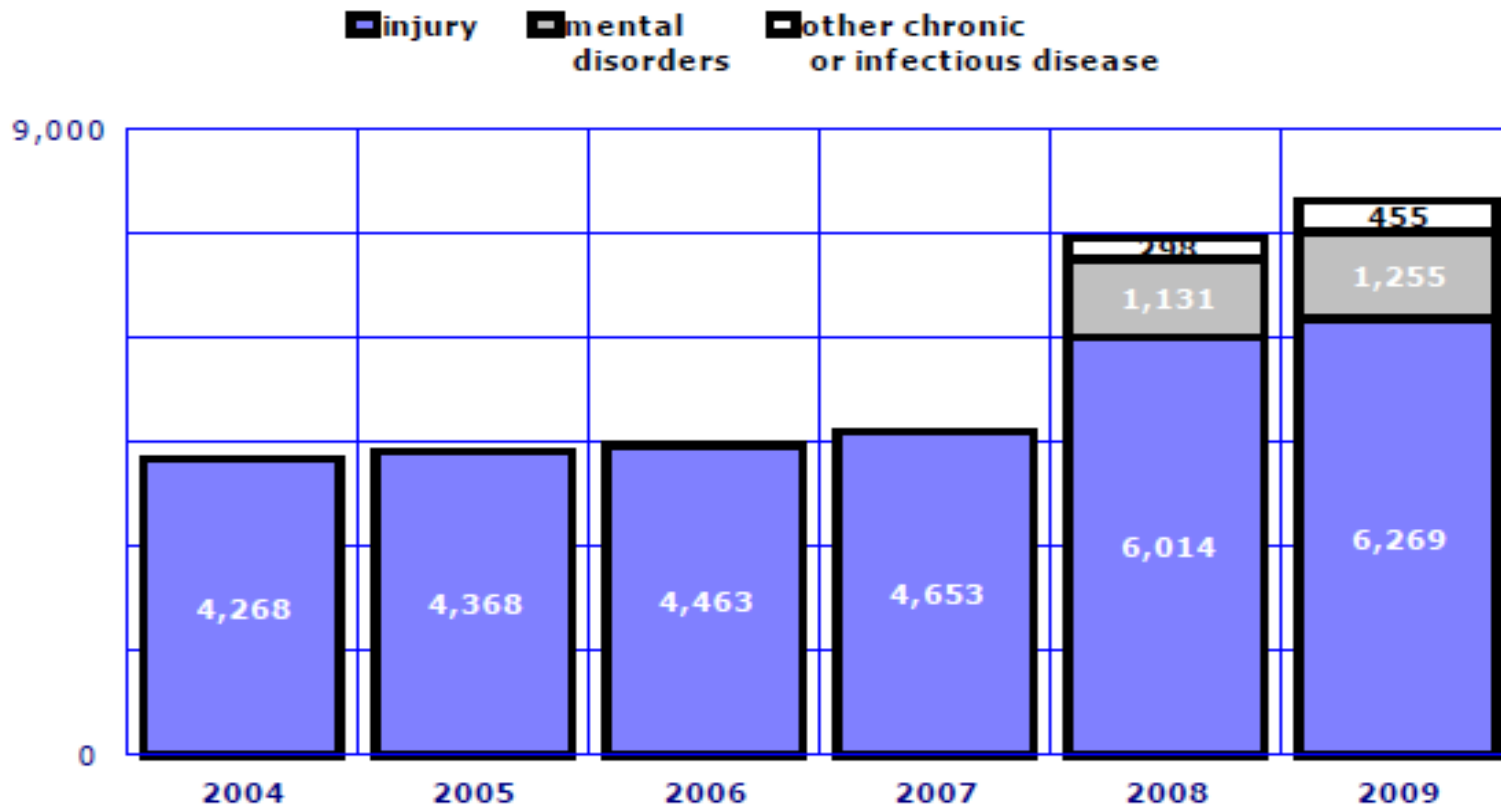


- ◆ American Indian (-12%)
- African American (+218%)
- ▲ White, non-Hispanic (+8%)
- Hispanic (-14%)
- ✕ Asian (-15%)
- All Arizonans (+3%)

Suicide-related Inpatient Discharges by Principal Diagnosis and Year, Arizona Residents, 2009



Suicide-related Emergency Room Visits by Principal Diagnosis and Year, Arizona Residents, 2009



National data

- 1 in 10 suicides is by a person who has already been seen by an ED staff member within 2 months of death
- Not- identified or *over- identified*

Key Informant Interviews

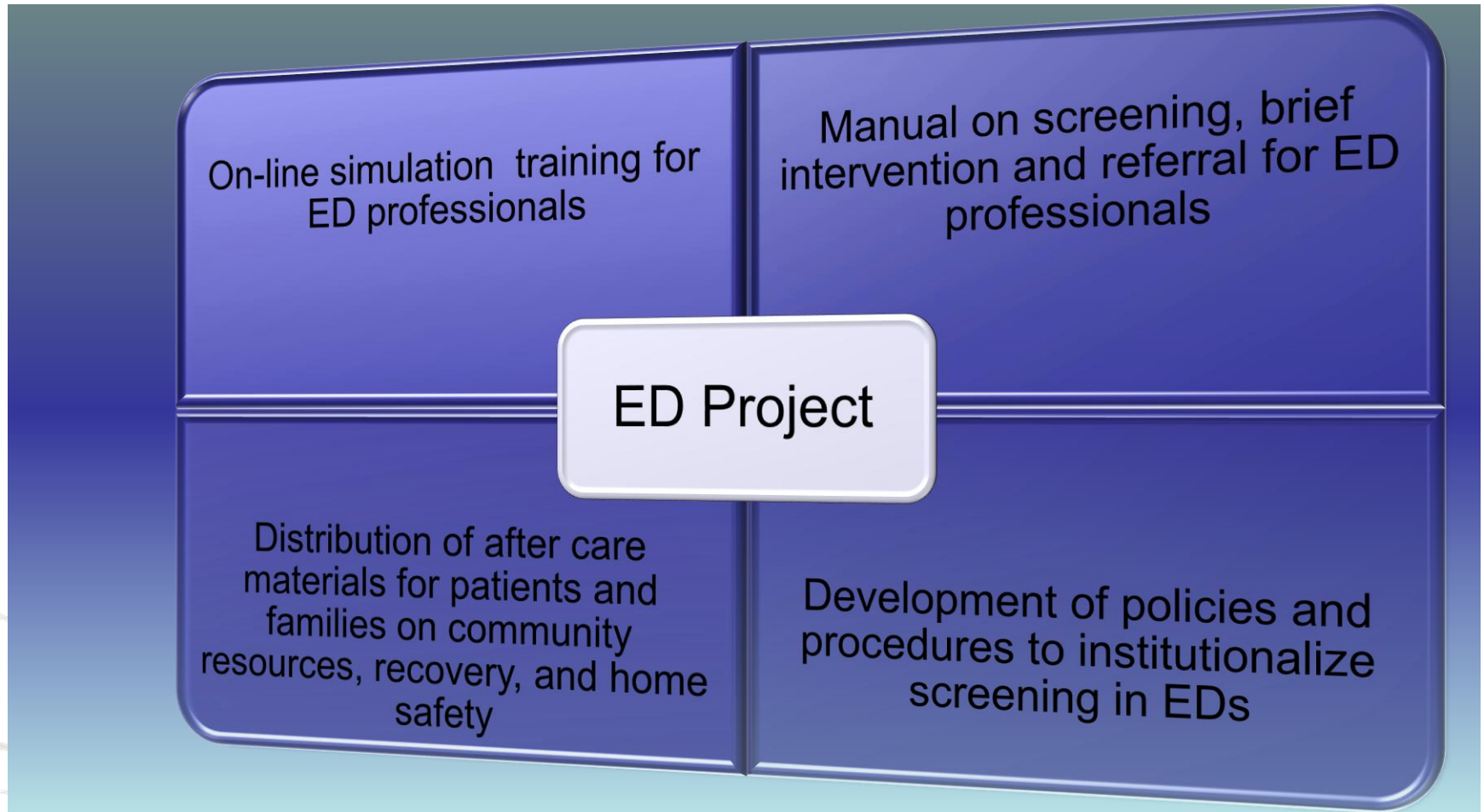
ED staff feedback-

Experience in screening and conducting
brief interventions

Focus on triage

Risk management

Medical Integration



Online Training

- Current suicide prevention trainings
- Features of the online training

Training demonstration



Leadership for a Healthy Arizona

THANK YOU!

Lisa.Shumaker@azdhs.gov

Markay.adams@azdhs.gov



Leadership for a Healthy Arizona